

**DIGITALE MUSIC PLAYER
MP3&WMA**

USER MANUAL

PLAY BLACK

Thank you for choosing this MP3 player! Please read the following user manual carefully and retain it for future use.

1. Installation instructions

1.1 Install the driver from the supplied CD if using Windows 98SE (For Windows ME/2000/XP or greater, you do not need to install the driver.)

- a. Click installation – the computer will install the driver automatically.

2. Connecting and downloading

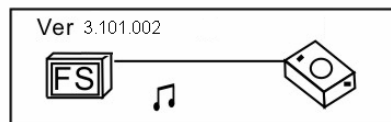
2.1 Connecting PC

Before operation, please verify that the player is turned off. Connect to PC with the supplied USB cable.

2.2 Download MP3 songs

- 1 To transfer music from your PC to your MP3 player, drag and drop the files in the normal way using Windows Explorer or My Computer.

Transferring Data



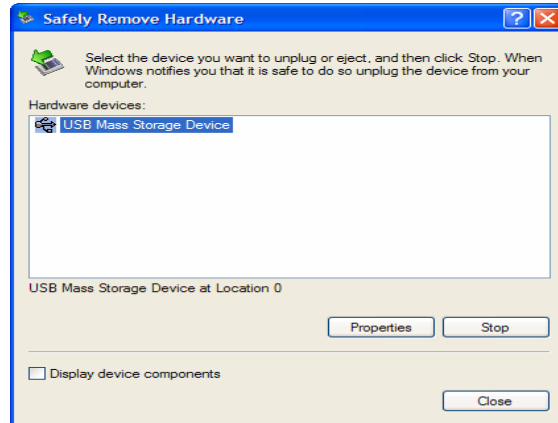
2.3 Removing USB device

- a. Double click the Safely Remove Hardware icon in the taskbar:

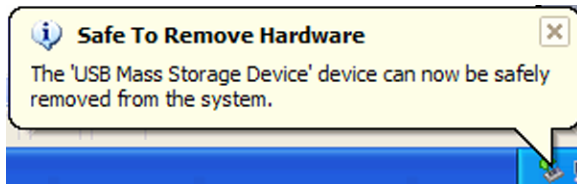


- b. From the Safely Remove Hardware screen, highlight "USB Mass Storage Device" item, then click "Stop" button.

“Stop a hardware device” appears as shown below.



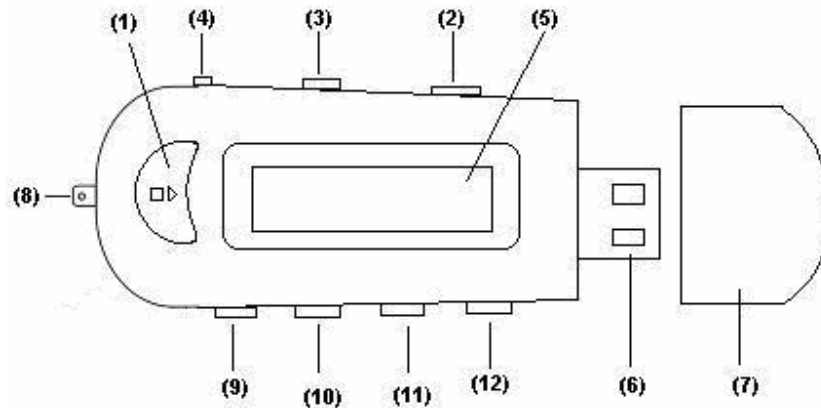
c. Click "OK" button. After the "Safe to Remove Hardware" window appears, the player can be disconnected from the PC safely.



Warning: An error might occur if you remove the USB cable during data transfer.

3. Basic operation

3.1 Buttons and functions



- (1) PLAY “▶” ⇒ OPEN/PLAY/PAUSE/STOP/POWER OFF
- (2) “HOLD” ⇒ Keyboard lock switch
- (3) “MODE” ⇒ Switch modes, menu selection by pressing on button
- (4) PHONE “📞” ⇒ Earphone input jack
- (5) LCD Liquid crystal display
- (6) ⇒ USB interface
- (7) ⇒ USB cover
- (8) ⇒ Cord hole
- (9) “◀◀” ⇒ PREV/REV
- (10) “▶▶” ⇒ NEXT/FWD
- (11) “VOL-” ⇒ Volume decrease/fast decrease
- (12) “VOL+” ⇒ Volume increase/fast increase

3.2 Turn on/off

Press ▶ for 3 seconds to power on.

Press and hold ▶ 3 seconds, the system will save the data and switch off.

3.3 Main menu

Press MODE button for 2 seconds to enter main menu. Press the ◀◀ or ▶▶ button to select **Music** or **System**. Press the MODE button to enter the selected option.

4. How to use the MP3 player

4.1 Playing MP3 files

- a. Select "Music" mode. You can press the ▶ button to play MP3 music as well as pause and resume playing.
- b. From play or pause mode, you can press the "Mode" button for 2 seconds to return to main menu
- c. Press the ◀ or ▶ button to select a music file.
- d. From play mode, you can press VOL +/- button to adjust volume.
- e. Press ▶ button for 3 seconds, the player will save the data and enter shutdown mode.

4.2 System

From main menu, use the ◀ or ▶ buttons to select **System**, and press the MODE button to enter.

The **system** menu includes: **System Time, Backlight, Language, Power off, Contrast, Memory info, Firmware version and Exit.**

Press MODE button to enter a submenu.

4.3.1 System Time

Enter here the correct date and time.

Press VOL+ button and the year- number will start flashing.

Change the year number by pushing ◀ 0 ▶

Press again VOL+ button and the months will start flashing...



When date and time are correct, press "MODE" button to confirm.

4.3.2 Backlight

Adjust the backlight intensity between 0 and 30

Press "MODE" Button to confirm

4.3.3 Language

Change the language

Press "MODE" button to confirm.

4.3.4 Power off

- Off time

With this function the device will automatically shut down after a preset time. (0-60sec), when no button is touched and music is not playing. If time is set at 0 seconds, the function is cancelled.

- Sleeping mode

With this function the device will always shut down after a preset time (0-120 min).

If time is set at 0, the function is cancelled.

When the device is powered off, sleeping mode is set at 0.

4.3.5 Replay mode

Manual replay or auto replay

4.3.6 Contrast

Change contrast.

Press “**MODE**” button to confirm.

4.3.7 Memory info

Gives a percentage of the used memory compared to the total memory size

4.3.8 Firmware version

Info about software version

5 Lock function

In any mode, slide the HOLD switch in the direction of arrow, a lock icon will appear on the display. All the buttons will be non-functional; to disable the lock function, slide the HOLD switch in the opposite direction, then the lock icon will disappear, and all the buttons will be functional.

6 Lyric synchronization:

This player supports lyric sync function.

NB: The lyric name must be the same as the music name, but with the extension of *. LRC and saved in the same directory. Only lyrics with time indication can be displayed properly.

7. Troubleshooting

Symptom	Causes	Solution
No display after pressing the power button.	The battery is out of power.	Please replace the battery.
No sound during playback.	<ol style="list-style-type: none"> 1. Volume is too low, or there is no music in the player, or battery low. 2. The MP3 or WMA file is corrupted or copy-protected. 	<ol style="list-style-type: none"> 1. Adjust the volume, or replace the battery. 2. Download the files again, making sure that they are not copy-protected.
Unable to download files after connection.	<ol style="list-style-type: none"> 1. The HOLD button is on, the disk is write protected. 2. The USB is not connected to PC properly. 3. Wrong storage directory. 	<ol style="list-style-type: none"> 1. Push the HOLD switch to the opposite direction. 2. Connect to the USB interface again and verify that the PC has identified the removable disk. 3. Maximum 256 folders or files can be saved under root folder; if exceeded, please create another subdirectory under root directory and then copy.
MP3 player cannot be recognized by PC.	Improper operation or the driver is not installed (Windows 98/SE only).	<ol style="list-style-type: none"> 1. Install the driver properly. 2. Format the removable disk.
No response after pressing button.	HOLD switch is on, buttons are locked.	Push the HOLD switch to the opposite direction.

8. Technical specifications

Bit rate:	8~320Kbps (MP3) 5~384Kbps (WMA)
SNR:	< 100db
Dynamic range:	>80dB (1KHZ)
Distortion:	<0.05%
USB interface:	USB2.0 full speed
Auto Shutdown:	2min, 10min, 30min
Output:	5mW x 2
LCD screen:	132 x 32

9. Technical support

For further information, please visit:

www.SOSmp3.com

