

DIGITAL MUSIC PLAYER

MP3 & WMA

**PLAY LITE V3
USER MANUAL**

Before connecting, operating or adjusting this product, please read these instructions fully.

Thank you for choosing this MP3 player! Please read the following user manual carefully and retain it for future use. For online support, please visit www.SOSmp3.com.

Attention.....	2
1. Installation instructions.....	2
2. PC connection and download.....	2
3. Basic operation.....	4
4. How to use your MP3 player.....	5
5. Lock function.....	11
6. Lyric sync.....	11
7. Troubleshooting.....	12
8. Technical specifications.....	13

Attention

- 1). Please do not use the player with earphones while driving a vehicle or riding a bicycle.
- 2). Please do not expose to direct sunlight, heat sources or dusty areas and please keep away from water.
- 3). Please do not clean the player with chemicals such as alcohol or thinner.
- 4). Do not disconnect the player from the PC while “downloading” files.
- 5). When you use this player as a USB stick, please always follow the correct operation method. Any misuse may cause files to be lost.

1. Installation instructions

1.1 Install the driver from the supplied CD if using Windows 98SE

(For Windows ME/2000/XP or greater, you do not need to install the driver.)

- a. Click installation – the computer will install the driver automatically.

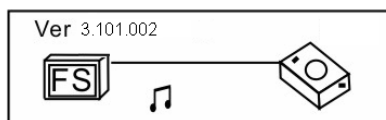
2. Connecting and downloading

2.1 Connecting PC

Before operation, please verify that the player is turned off. Connect to PC with the supplied USB cable.

2.2 Download MP3 songs

- To transfer music from your PC to your MP3 player, drag and drop the files in the normal way using Windows Explorer or My Computer.



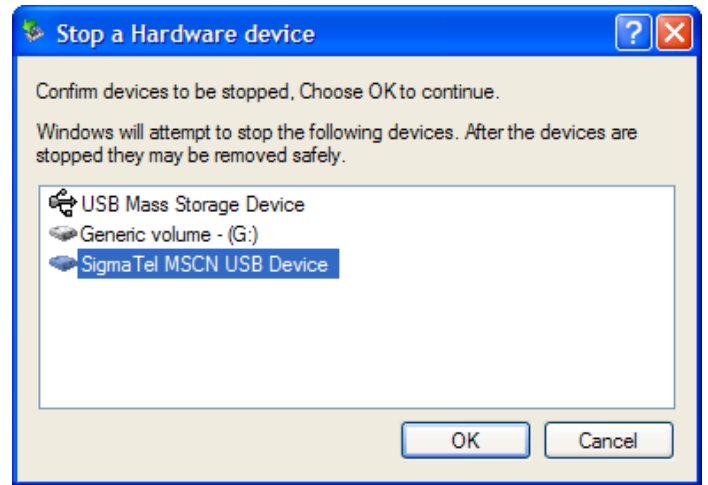
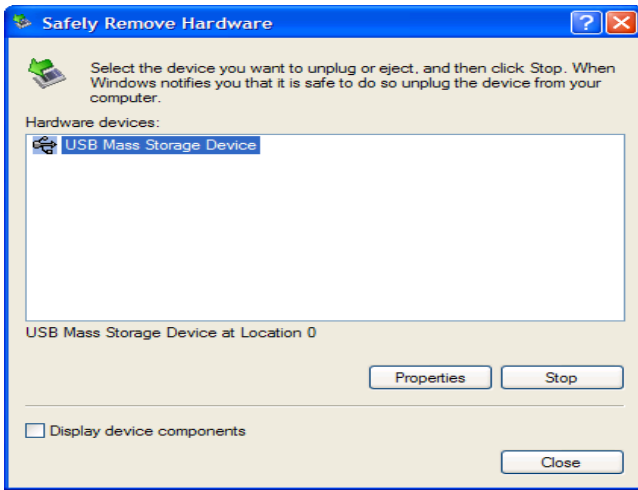
Transferring Data

2.3 Removing USB device

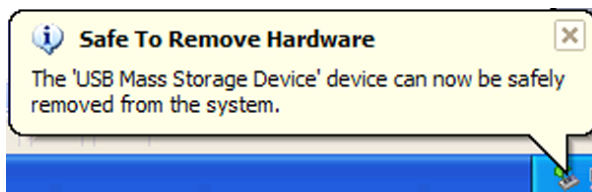
- a. Double click the Safely Remove Hardware icon in the taskbar:



b. From the Safely Remove Hardware screen, highlight "USB Mass Storage Device" item, then click "Stop" button. "Stop a hardware device" appears as shown below.



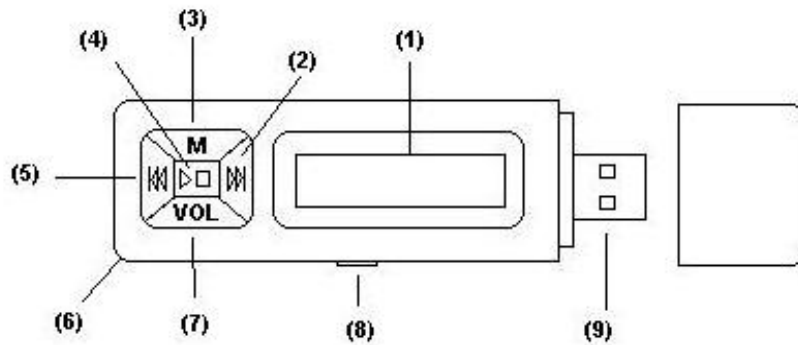
c. Click "OK" button. After the "Safe to Remove Hardware" window appears, the player can be disconnected from the PC safely.



Warning: An error might occur if you remove the USB cable during data transfer.

3. Basic operation

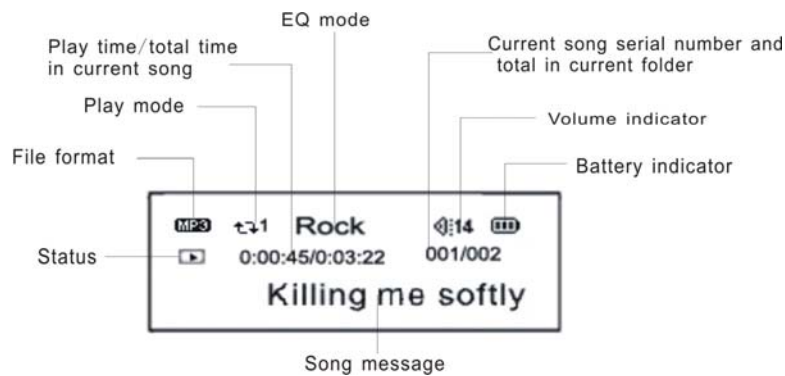
3.1 Buttons and functions



1 Figure & Keys:

1. LCD display screen
2. F.FWD (Next)
3. Menu / A-B Record
4. Turn on/off, Play/Pause/Stop Record
5. F.REV (Previous)
6. Mic
7. Vol.
8. Hold
9. USB Port

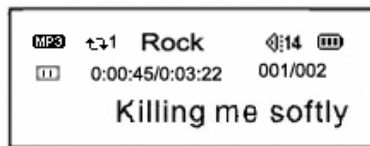
LCD window



3.2 Turn on/off

Press ► || for 3 seconds to power on. Player enters MP3 standby mode.

MP3 standby mode:



From MP3 standby and play mode, press and hold ► || 3 seconds, the system will save the data and switch off.

3.3 Main menu

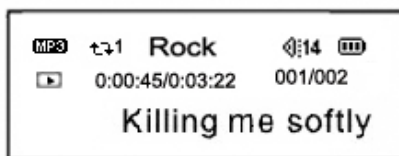
Press MENU button for 2 seconds to enter main menu. Press the ◀ or ▶ button to select Music, Voice, Music Library, Settings, Record, About, Exit. Press the MENU button to enter the selected option.

4. How to use the MP3 player

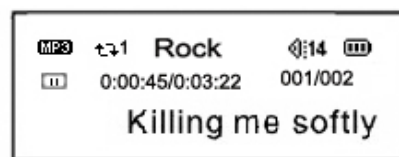
4.1 Playing MP3 files

a. From MP3 standby mode, you can press the ► || button to play MP3 music as well as pause and resume playing.

Playing:



Pause:



- b. From play or pause mode, you can press the ► || button for 2 seconds to return to MP3 standby mode.
- c. Press the ◀ or ▶ button to select a music file.
- d. From play mode, you can press VOL button and then press ◀ or ▶ button to adjust volume.
- e. Press ► || button for 3 seconds, the player will save the data and enter shutdown mode.
- f. From play mode, you can press MENU button to select start point A; then press MENU button to select end point B, MP3 will play between A-B. Press MENU button again to cancel setting and resume playing MP3.

4.2 Voice playback mode

From main menu, use the ◀ or ▶ buttons to select “Voice”, and press the MENU button to enter the voice playback mode. All recordings made in Record mode are saved here. Use ▶ || button to pause and resume playing. Press the ◀ or ▶ button to select last or next voice file.

4.3 Music library

From main menu, use the ◀ or ▶ buttons to select music library, and press the MENU button to enter.



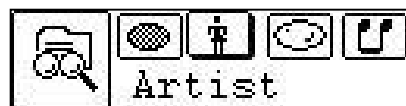
4.3.1 Play all

Use ◀ or ▶ button to select “play all” function. Press the MENU button to enter. Player will play all songs.



4.3.2 Artist

Use ◀ or ▶ button to select “Artist” function. Press the MENU button to enter. In Artist mode, all the songs will be sorted according to the artist. You can select a certain artist, or choose to play all. Press MENU button to confirm.



4.3.3 Album

Use ◀ or ▶ button to select “Album” function. Press the MENU button to enter. You can select a certain Album, or choose to play all. Press MENU button to confirm.



4.3.4 Track

Use ◀ or ▶ button to select “Track” function. Press the MENU button to enter. You can select a certain track, or choose to play all. Press MENU button to confirm



4.3.5 Genre

Use ◀ or ▶ button to select “Genre” function. Press the MENU button to enter. You can select a certain Genre, or choose to play all. Press MENU button to confirm



4.3.6 Year

Use ◀ or ▶ button to select “Year” function. Press the MENU button to enter. You can select a certain Year, or choose to play all. Press MENU button to confirm.



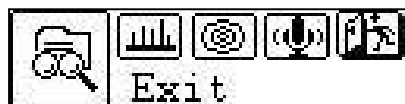
4.3.7 Voice record

Use ◀ or ▶ button to select “Voice record” function. Press the MENU button to enter. All the voice files are saved in this folder. You can select a certain file, or select to play all. Press MENU button to confirm.



4.3.8 Exit

Press the ◀ or ▶ button to select exit function. Press the MENU button to return Standby mode.



4.4 Settings

From main menu, use the ◀ or ▶ buttons to select Settings, and press the MENU button to enter.

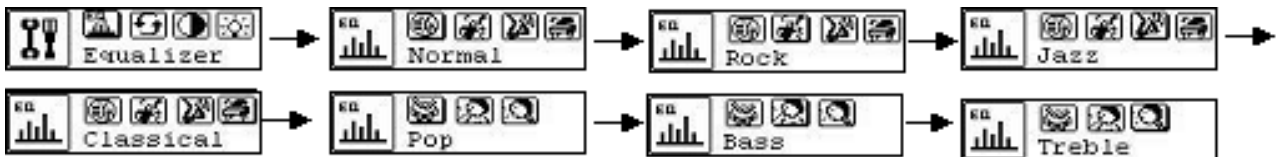
The settings menu includes: EQ set, Play mode, Contrast, Display time, Power settings, Record settings, Text scroll speed, Language, Load default and Exit.

Press MENU button to enter a submenu.



4.4.1 EQ setting

Press the ◀ or ▶ button to select an EQ mode: Normal, Rock, Jazz, Classical, Pop, Bass and Treble. Press the MENU button to save the setting.



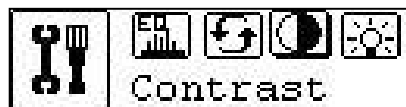
4.4.2 Play mode setting

Press the ◀ or ▶ button to select a play mode: Normal, Repeat one, Repeat all, Shuffle, Shuffle Repeat and Preview. Press the MENU button to save the setting.



4.4.3 Contrast setting

Press the ◀ or ▶ button to adjust the contrast of the LCD. Press the MENU to save the setting.



4.4.4 Backlight time setting

Press the ◀ or ▶ button to select backlight time setting:

0 seconds, 5 seconds, 10 seconds, on (all the time). Press the MENU button to save.



4.4.5 Power setting

Press the ◀ or ▶ button to select power setting:

Disable, 2 minutes, 10 minutes, 30 minutes. Press the MENU button to save.



4.4.6 Record setting

Press the ◀ or ▶ button to select record settings:

8000Hz, 16000Hz, 32000Hz, 48000Hz.

A higher frequency (Hz) value gives higher sound quality, but needs more memory space.

Press the MENU button to save.



4.4.7 Text scroll speed

Press the ◀ or ▶ button to select Display speed:

Slowest (-2), slow (-1), normal (0), fast (1), fastest (2).

Press the MENU button to save.



4.4.8 Language set

Press the ◀ or ▶ button to select language setting.

Press the MENU button to save.



4.4.9 Load default set

Press the ◀ or ▶ button to select “Load default”:
Select “YES” or “NO”. Press MENU button to confirm.
If you select “YES”, the player will revert to its factory settings and shut off.



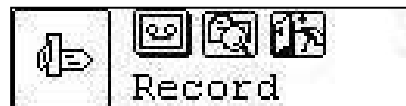
4.4.10 Exit

Press the ◀ or ▶ button to select “exit”.
Press the MENU button to enter the exit setting, and the player will return to the main menu.



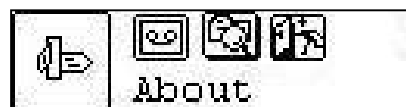
4.5 Recording function

From the main menu, use the ◀ or ▶ buttons to select “Record”, and press the MENU button to start recording, during which you can press ▶ || button to pause, and press the MENU button to finish recording and save. You can listen to the voice file in the voice mode.



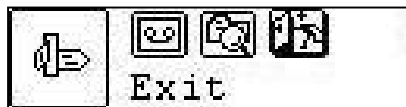
4.6 About

From the main menu, use the ◀ or ▶ buttons to select “About”, and press the MENU button to view the total and available capacity.



4.7 Exit

Return to MP3 Standby.



4.8 A-B Repeat Mode

From MP3 or voice play mode:

- 1) Press **MENU** button to select start point A.



- 2) Press **MENU** button to select end point B, MP3 will play between A-B.



- 3) Press **MENU** button again to cancel setting and resume playing MP3 or voice file.

5. Lock function

In any mode, slide the HOLD switch in the direction of arrow, a lock icon will appear on the display. All the buttons will be non-functional; to disable the lock function, slide the HOLD switch in the opposite direction, then the lock icon will disappear, and all the buttons will be functional.

6. Lyric synchronization:

This player supports lyric sync function.

NB: The lyric name must be the same as the music name, but with the extension of *.LRC and saved in the same directory. Only lyrics with time indication can be displayed properly.

7. Troubleshooting

Symptom	Causes	Solution
No display after pressing the power button.	The battery is out of power.	Please replace the battery.
No sound during playback.	<ol style="list-style-type: none"> 1. Volume is too low, or there is no music in the player, or battery low. 2. The MP3 or WMA file is corrupted or copy-protected. 	<ol style="list-style-type: none"> 1. Adjust the volume, or replace the battery. 2. Download the files again, making sure that they are not copy-protected.
Unable to download files after connection.	<ol style="list-style-type: none"> 1. The HOLD button is on, the disk is write protected. 2. The USB is not connected to PC properly. 3. Wrong storage directory. 	<ol style="list-style-type: none"> 1. Push the HOLD switch to the opposite direction. 2. Connect to the USB interface again and verify that the PC has identified the removable disk. 3. Maximum 256 folders or files can be saved under root folder; if exceeded, please create another subdirectory under root directory and then copy.
MP3 player cannot be recognized by PC.	Improper operation or the driver is not installed (Windows 98/SE only).	<ol style="list-style-type: none"> 1. Install the driver properly. 2. Format the removable disk.
No response after pressing button.	HOLD switch is on, buttons are locked.	Push the HOLD switch to the opposite direction.

8. Technical specifications

Bit rate:	8~320Kbps (MP3) 5~384Kbps (WMA)
SNR:	< 100db
Dynamic range:	>80dB (1KHZ)
Distortion:	<0.05%
USB interface:	USB2.0 full speed
Auto Shutdown:	2min, 10min, 30min
Output:	5mW x 2
Voice recording:	8000Hz /16000Hz /32000Hz
LCD screen:	132 x 32

For online support, please visit:

www.SOSmp3.com